

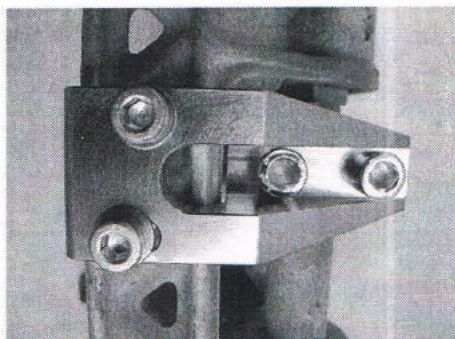
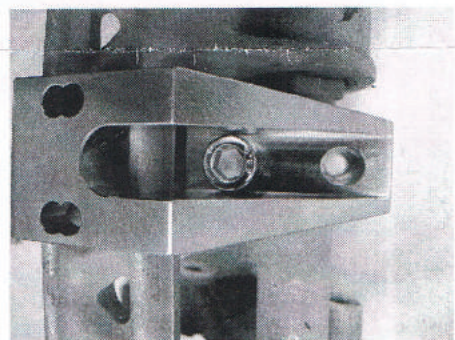
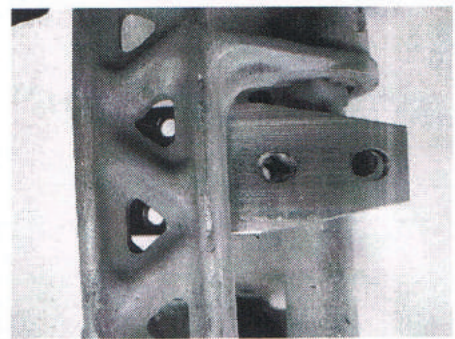
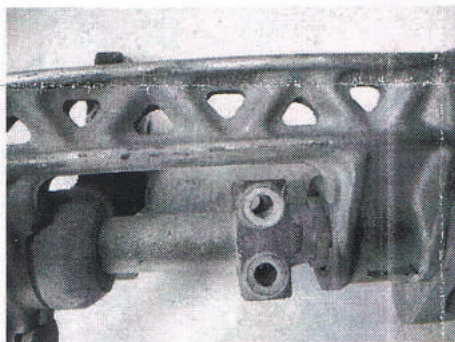
## Cedar Ridge Fabrication NSX Compliance Clamps

The Cedar Ridge Fabrication NSX Compliance Clamps will stabilize the front suspension of your car during hard braking to greatly increase the steering sensitivity. These clamps are designed for the 1991-2005 Acura/Honda NSX.

We recommend use of a Genuine Honda Service Manual to supplement these instructions. Cedar Ridge Fabrication parts are intended to be installed by a professional mechanic. Always use jackstands to support the vehicle when a car lift is not available.

### Parts list:

- (2) Compliance Clamps & base plates
- (4) 50mm 8M socket head bolts
- (4) Stainless steel 8 mm washers
- (4) 110mm 10 mm socket head bolts



### Installation:

1. Raise NSX off ground with car lift or jack and jackstands.
2. Remove front wheels.
3. Remove 2 bolts on compliance mount. Compliance mount is shown with the 2 bolts removed.
4. Clean all surfaces of the compliance mount and joint. [photo 1]
5. Select the correct Compliance Clamp configuration for the side you are working on. Offset of threaded base plate bolt holes should match offset pattern of the cast joint arm girder structure. Picture shows the right side clamp being installed on the right side mount.
6. Slide the base plate between the mount surface and the joint arm. [photo 2]
7. Slide the top clamp over the cast compliance joint arm which has triangular holes. This will be a tight fit.
8. Rotate the clamp to align all the holes. The 2 large holes will align with the compliance mount, the small holes will align with 2 of the triangular holes in the compliance joint arm.
9. Use a small amount of Anti-seize compound on the long 10 MM bolts and insert them through the clamp, mounting plate and into the sub-frame, thread but *do not tighten!* [photo 3]
10. Slide the 8 mm washers on the 8M bolts.
11. Use a small amount of medium thread locker on the 2) 8M bolts, insert them into the clamp and tighten finger tight. [photo 4]
12. Torque the 10 mm bolts to 43 ft/lbs. Torque the 8M bolts to 16 ft/lbs. Check torque on all bolts after they are tight.
13. Repeat on the other side of the car by flipping the base plate over to match left side mount offsets.
14. Thanks for buying and using **Cedar Ridge Fabrication parts!**

There is no warranty implied or expressed beyond workmanship in manufacturing of Cedar Ridge Fabrication, the sole remedy for any claim against the manufacturer is limited to repair or replacement of the part. Parts used in competition carry no warranty. Installation of this part indicates acceptance of the above warranty.